

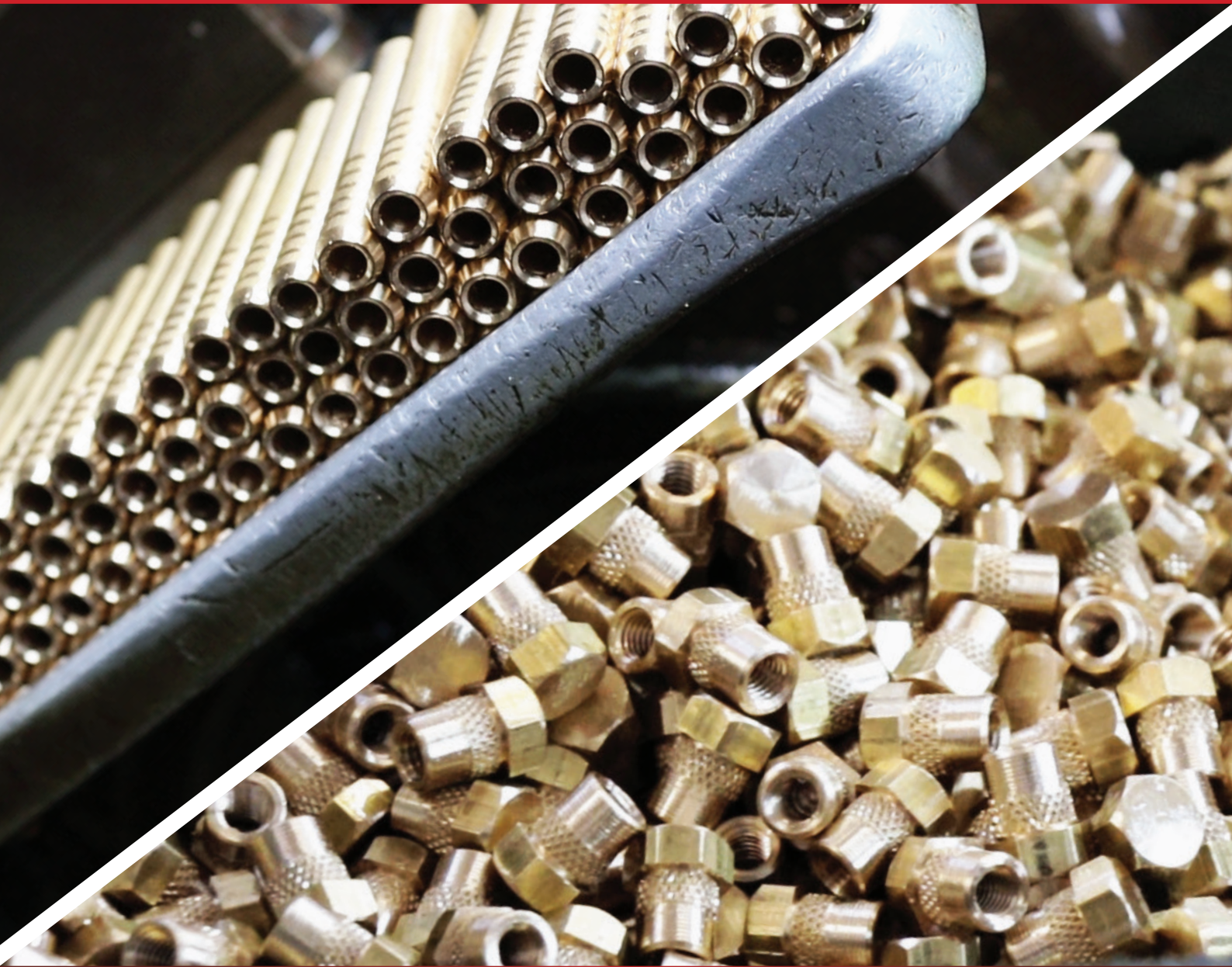


**EXTRATECH 2001 (PTY) LTD**

Member of the Redman Group

# FACTORY SHOP

Catalogue





**EXTRATECH 2001** (PTY) LTD  
Member of the Redman Group

## Battery Terminals



### STANDARD BATTERY TERMINAL

**Code: PRESTD01**

#### Description

Standard battery terminals for medium size vehicles

Price on request



### LIGHT DUTY BATTERY TERMINAL

**Code: PRELD01**

#### Description

Light duty terminals for import eastern vehicles and engines smaller than 1000cc

Price on request



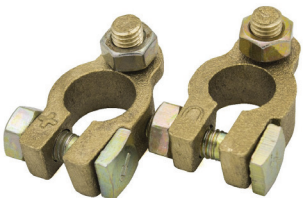
### HEAVY DUTY BATTERY TERMINAL

**Code: PREHD01**

#### Description

Heavy duty terminals for trucks, busses and industrial vehicles.

Price on request



### 4x4 TYPE BATTERY TERMINAL

**Code: PRE4X401**

#### Description

4x4 Type terminal set, designed for the off road vehicle to easier connect extra appliances like refrigerators.

Price on request





**EXTRATECH 2001** (PTY) LTD

Member of the Redman Group



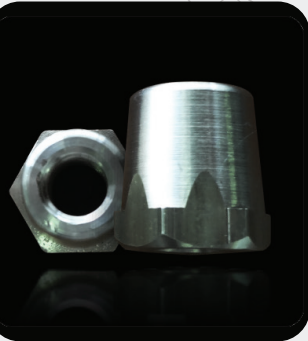
### MARINE TYPE BATTERY TERMINAL

**Code: PRESTD01**

#### Description

Marine type terminal, to use in boating applications.

Price on request



### BRASS BATTERY CAP

**Code: PRESTD01**

#### Description

Brass battery caps positive and negative to fit M10 battery studs.  
(Battered with treads instead of poles)

Price on request

## Jumper Leads



### 120AMP JUMPER LEAD

**JUMP001** 120 amp Clamps, 16mm<sup>2</sup> Cable, 2.5m Long

**JUMP002** 120 amp Clamps, 16mm<sup>2</sup> Cable, 3m Long

Price on request



### 500AMP JUMPER LEAD

**JUMP003** 500 amp Clamps, 25mm<sup>2</sup> Cable, 3m Long

500 amp Clamps, 35mm<sup>2</sup> Cable, 3m Long

Price on request



**EXTRATECH 2001** (PTY) LTD

Member of the Redman Group

## Charging Clamps



### 40 AMP CLAMP

**BCC01A** 40 Amp Charging Clamp - Set of 2

**BCC01B** 40 Amp Charging Clamp - Set of 4

Price on request



### 120 AMP CLAMP

**BCC03A** 120 Amp Charging Clamp - Set of 2

**BCC03B** 120 Amp Charging Clamp - Set of 4

Price on request



### 600 AMP CLAMP

**BCC05A** 600 Amp Charging Clamp - Set of 2

**BCC05B** 600 Amp Charging Clamp - Set of 4

Price on request

### \*Terms and Conditions Apply

- Certain items are manufactured to order and may take up to 4 weeks to become available for collection or delivery
- All Items Quoted will be subjected to minimum order quantities.
- Prices are subject to quantities, and current raw material price.
- Prices quoted will always be Ex-Factory.
- Distributors are welcome."



**EXTRATECH 2001** (PTY) LTD

Member of the Redman Group

## Battery Made Up Cables



### BRAIDED UNIVERSAL ENGINE TO CHASSIS

**Code: EC001**

#### Description

Length from 125mm to 725mm

Price on request



### BRAIDED RING STRAP

**Code: ES001**

#### Description

Length from 125mm to 725mm

Price on request



### BATTERY TO STARTER (RED & BLACK)

**Code: BS016**

#### Description

16mm<sup>2</sup>, 25mm<sup>2</sup> & 40mm<sup>2</sup>

Length from 225mm to 1800mm

Price on request



### STARTER TO SWITCH (RED & BLACK)

**Code: SS016**

#### Description

16mm<sup>2</sup>, 25mm<sup>2</sup> & 40mm<sup>2</sup>

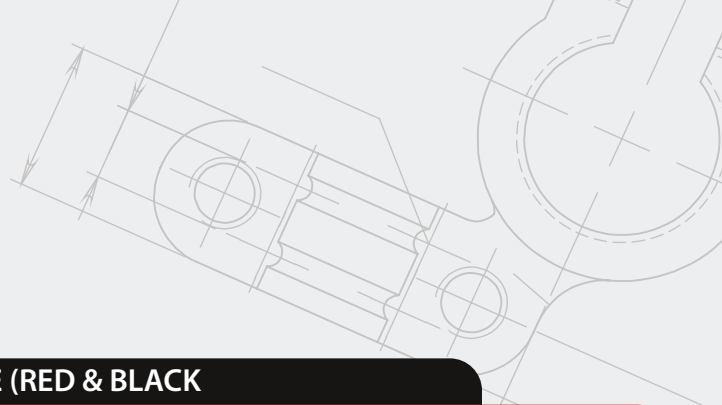
Length from 225mm to 1200mm

Price on request



**EXTRATECH 2001** (PTY) LTD

Member of the Redman Group



### BATTERY CONNECTOR CABLE (RED & BLACK)

**Code: BC016**

#### Description

16mm<sup>2</sup>, 25mm<sup>2</sup> & 40mm<sup>2</sup>

Length from 225mm to 1200mm

Price on request

## Miscellaneous



### BRASS IMPACT SPRINKLER

**Code: BIS01**

#### Description

Solid brass impact sprinkler. Available in brass or black.

Price on request



### "BIG BILLY" BILTONG SLICER

**Code: BBB01**

#### Description

Biltong slice

Price on request



### "SCHAEFER PRESS" NUT CRACKER

**Code: SPNC01**

#### Description

Nut cracker

Price on request